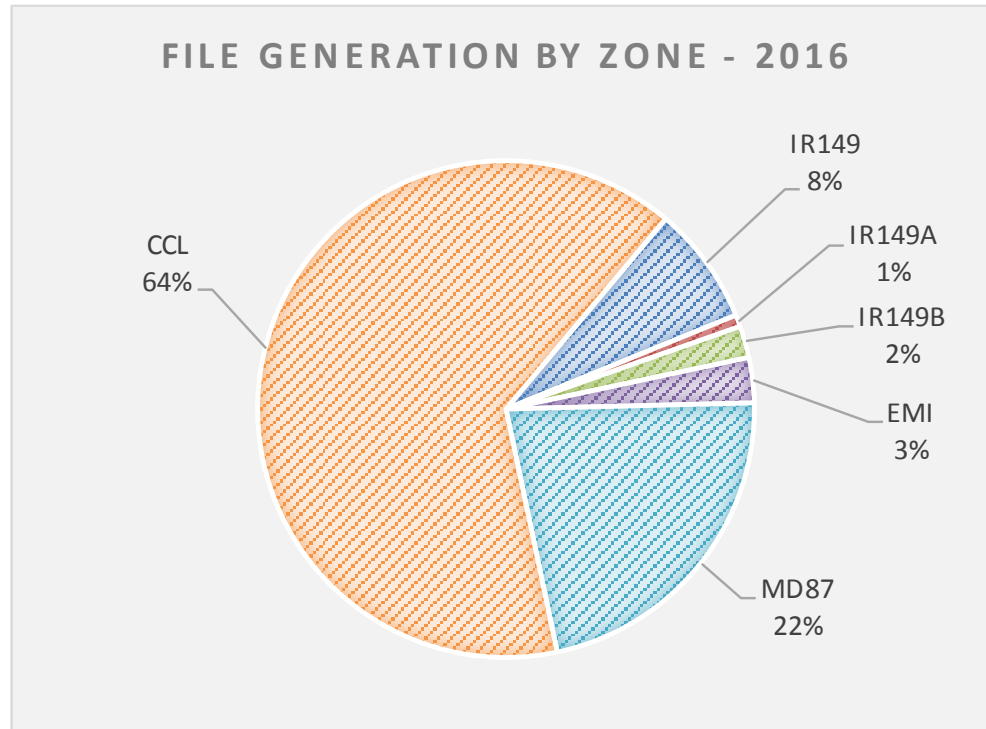




## Cold Lake Detachment – File Generation by Zone (Location) 2016





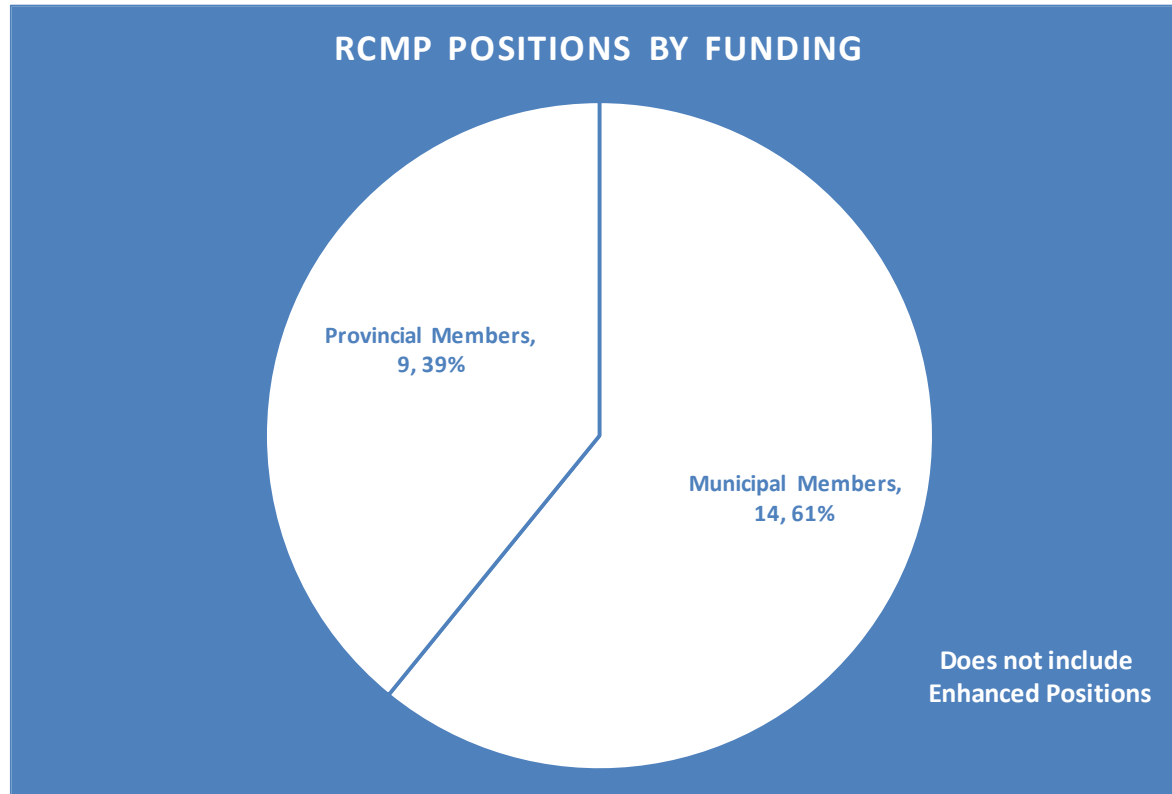
## Cold Lake Detachment – File Generation by Zone (Location) 2014-2016

% of Files Generated by Zone	2014	2015	2016
Elizabeth Métis Settlement (EMI)	4%	4%	3%
M.D. of Bonnyville #87 (MD87)	18%	19%	22%
City of Cold Lake (CCL)	64%	64%	64%
Cold Lake First Nations #149 (IR149)	10%	9%	8%
Cold Lake First Nations #149A (IR149A)	1%	1%	1%
Cold Lake First Nations #149B (IR149B)	3%	3%	2%



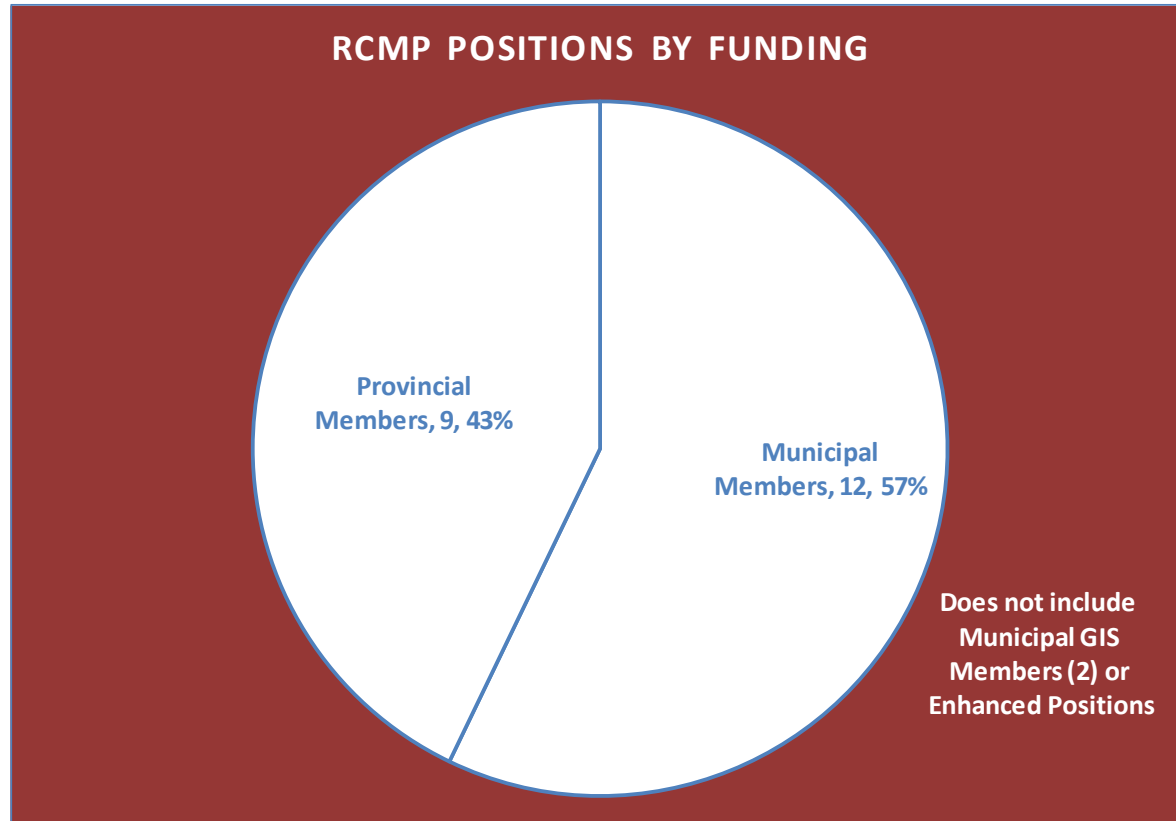


## Cold Lake Detachment – File Count by Year 2012 to 2016



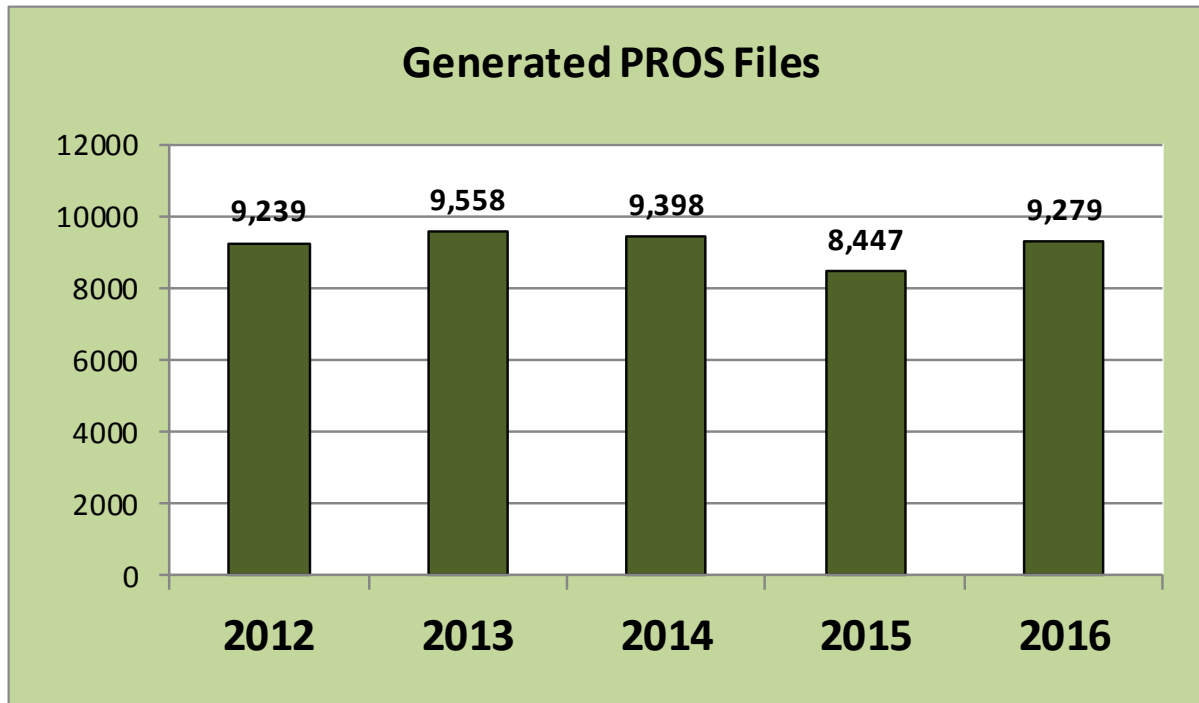


## Cold Lake Detachment – File Count by Year 2012 to 2016



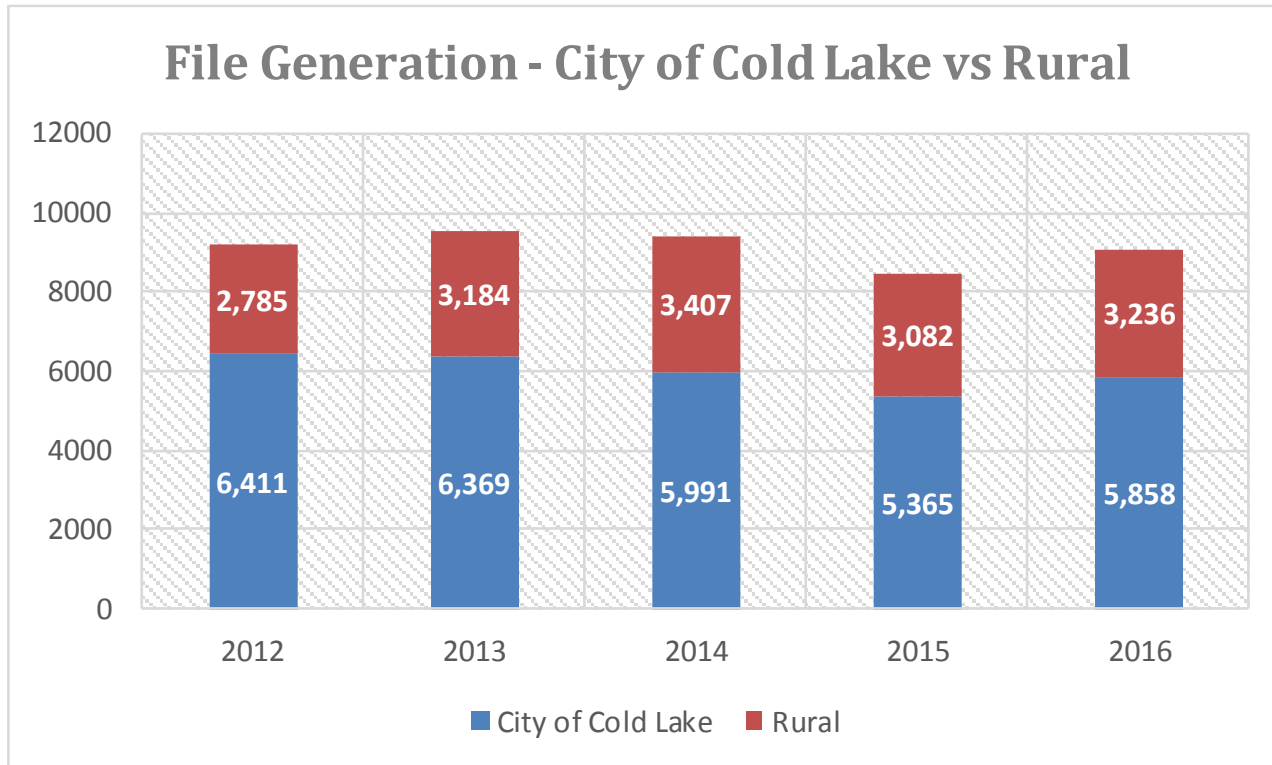


## Cold Lake Detachment – File Count by Year 2012 to 2016



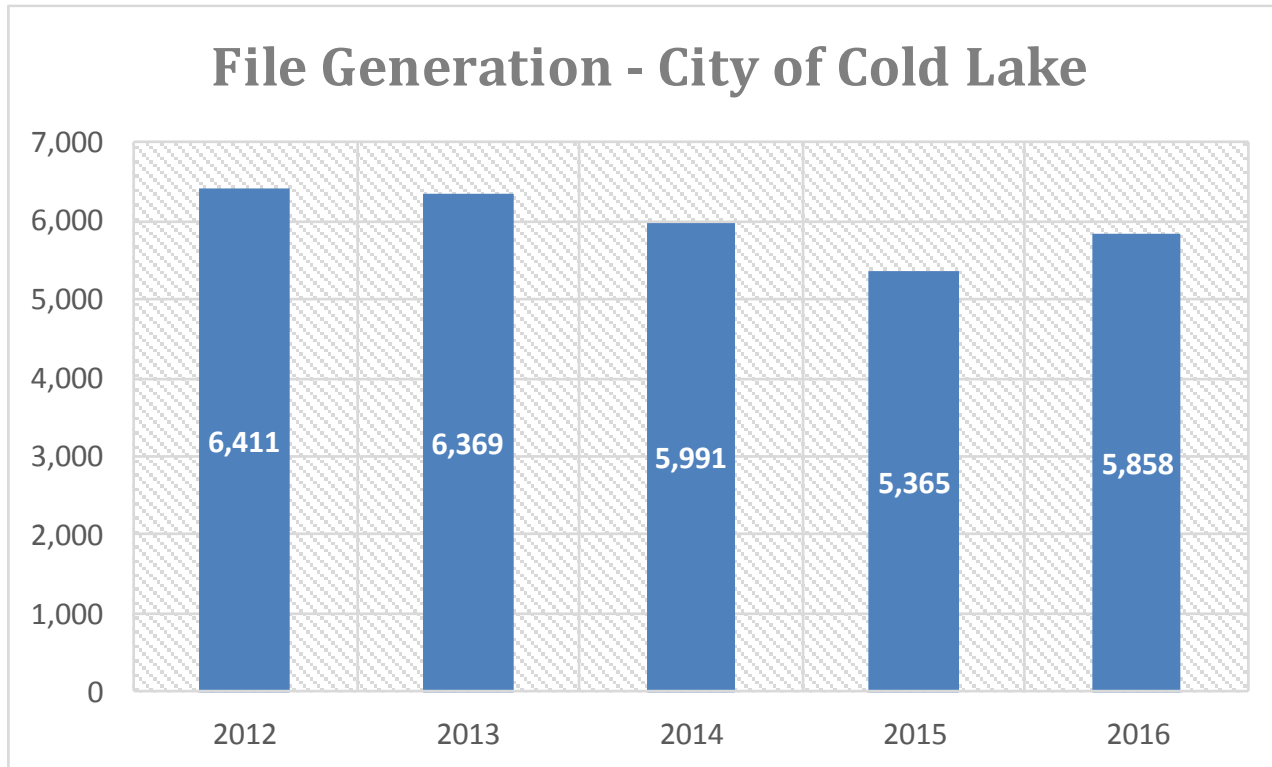


## Cold Lake Municipal/Rural – File Count by Year 2012 to 2016





## Cold Lake Municipal – File Count by Year 2012 to 2016





## Cold Lake Municipal Detachment – Clearance Rates (Incident Based)

CLEARANCE RATES	2013	2014	2015	2016
CC - Persons	81%	78%	82%	86%
CC - Property	39%	39%	42%	36%
CC - Other	69%	105%	65%	65%
<b>TOTAL CRIMINAL CODE</b>	<b>54%</b>	<b>46%</b>	<b>55%</b>	<b>53%</b>

When a police investigation leads to the identification of a suspect against whom a charge could be laid, then that incident can be cleared.

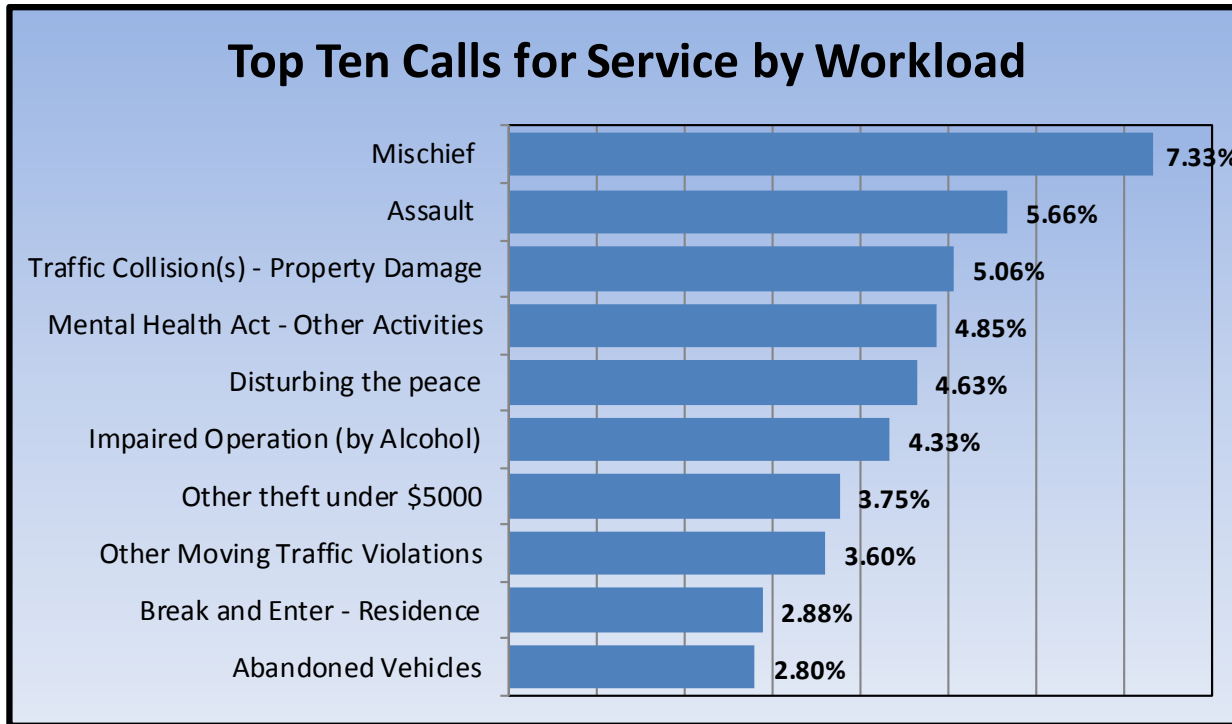
*Municipal Division Average Clearance Rates for 2015 were: CC Persons 83%; CC Property 28%; CC Other 69%; and Total CC: 47%*







## Cold Lake Detachment – Top Ten calls for Service by Workload 2016





## Cold Lake Municipal Detachment – Criminal Code Persons

Note: The previous slides were based on file counts.  
 The following slides are based on the crime(s) that are reported in those files.  
 (i.e. one file may have two or more crimes involved)

Municipal Detachment Area Only	Trend	2013	2014	2015	2016
Robbery		16	10	8	14
Assault		254	162	211	288
Uttering Threats		49	61	63	105
<b>TOTAL PERSONS</b>		<b>417</b>	<b>288</b>	<b>357</b>	<b>455</b>





## Cold Lake Municipal Detachment – Property Crime

Municipal Detachment Area Only	Trend	2013	2014	2015	2016
Break & Enter		61	67	63	98
Theft of Motor Vehicle		106	162	86	154
Theft Under \$5,000		366	311	316	385
Possn Stn Goods		17	22	32	42
Mischief To Property		599	589	634	536
<b>TOTAL PROPERTY</b>		<b>1,221</b>	<b>1,213</b>	<b>1,221</b>	<b>1,310</b>





## Cold Lake Municipal Detachment – Community Engagement

Select Categories	2013	2014	2015	2016	% Change 2015-2016
Mischief To Property	599	589	634	536	↓ -15%
Disturbing the peace	254	165	313	219	↓ -30%
Suspicious Person/Vehicle/Property	80	186	148	390	164%





## Cold Lake Municipal Detachment – Prisoners Held





## Recent Significant Arrests

- August 24<sup>th</sup>, 2016 – Search Warrant leads to 24 charges on two adult males for stolen property and weapons offences.
- September 23<sup>rd</sup>, 2016 – 31 property and weapons charges laid on 7 adults and 1 youth.
- October 14<sup>th</sup>, 2016 – Traffic stop leads to charges and the seizure of 7.76 pounds of Cannabis Marihuana and 163 grams of Cannabis Resin.
- October 21<sup>st</sup>, 2016 – 9 property and person crime charges laid against 1 adult male.
- November 25<sup>th</sup>, 2016 – 42 property and driving offences laid on 1 adult male.
- November 28<sup>th</sup>, 2016 – Solved 4 robberies that were committed in Cold Lake during the summer and fall of 2016. 28 charges laid against 2 youths.
- December 3<sup>rd</sup>, 2016 – 21 charges laid against an adult male also wanted on several warrants.
- December 8<sup>th</sup>, 2016 – 12 charges laid against an adult male following a police pursuit.



# RCMP



ROYAL CANADIAN MOUNTED POLICE

## Questions?

## Thank you!

S/Sgt. Jeremie Landry  
Detachment Commander  
Cold Lake RCMP



Royal Canadian Mounted Police Gendarmerie royale du Canada

Canada 